

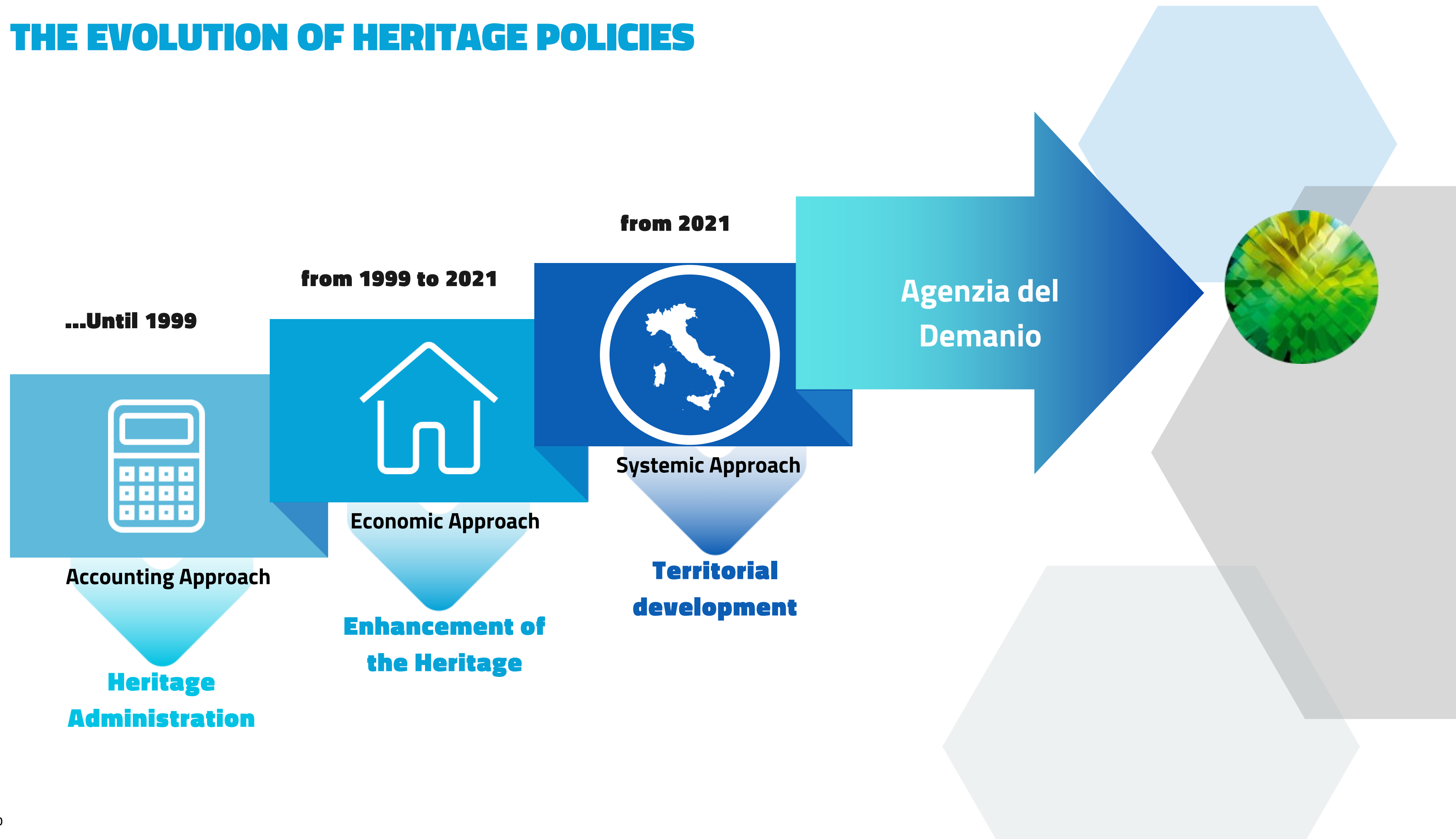


PIANO CITTÀ

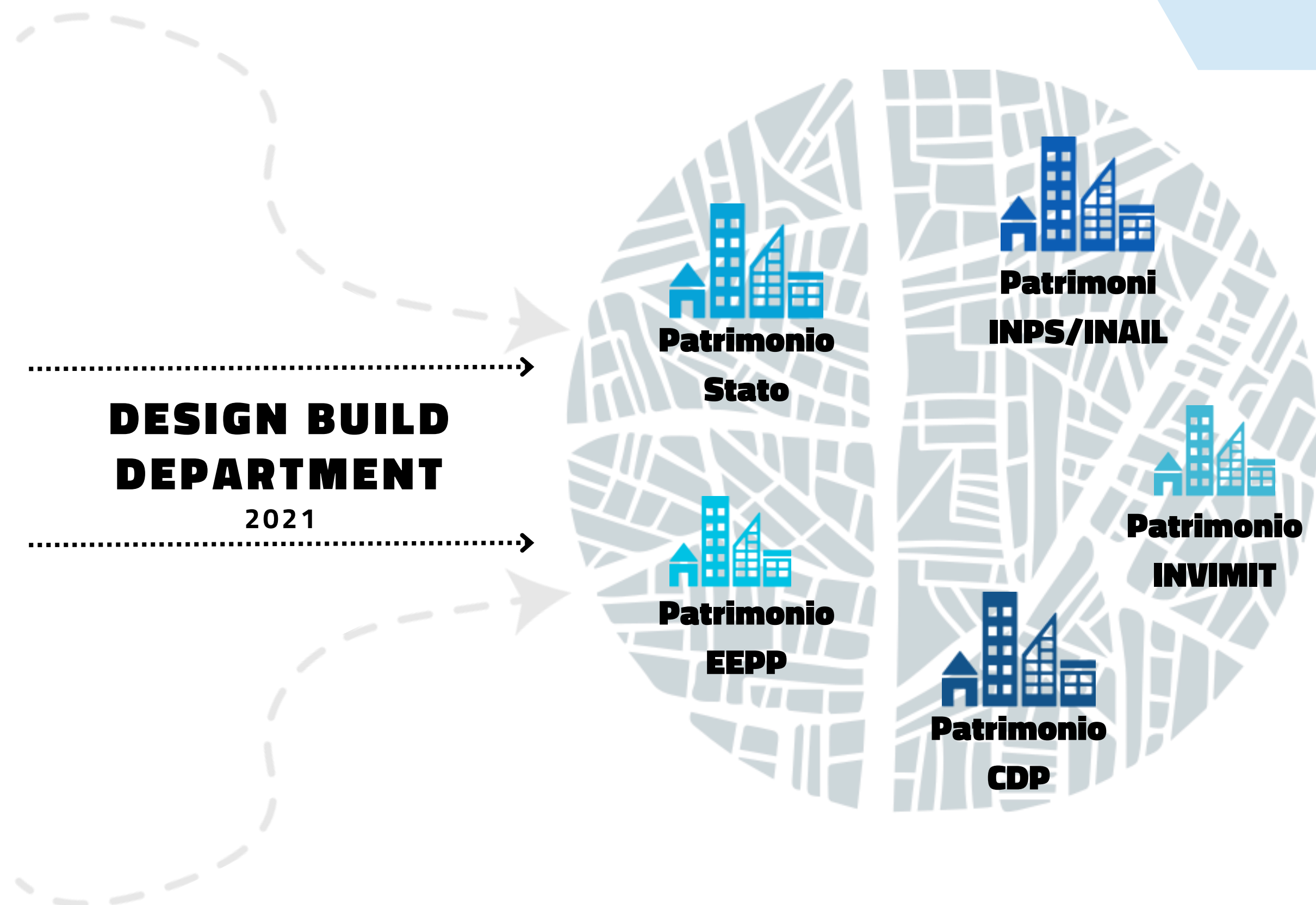
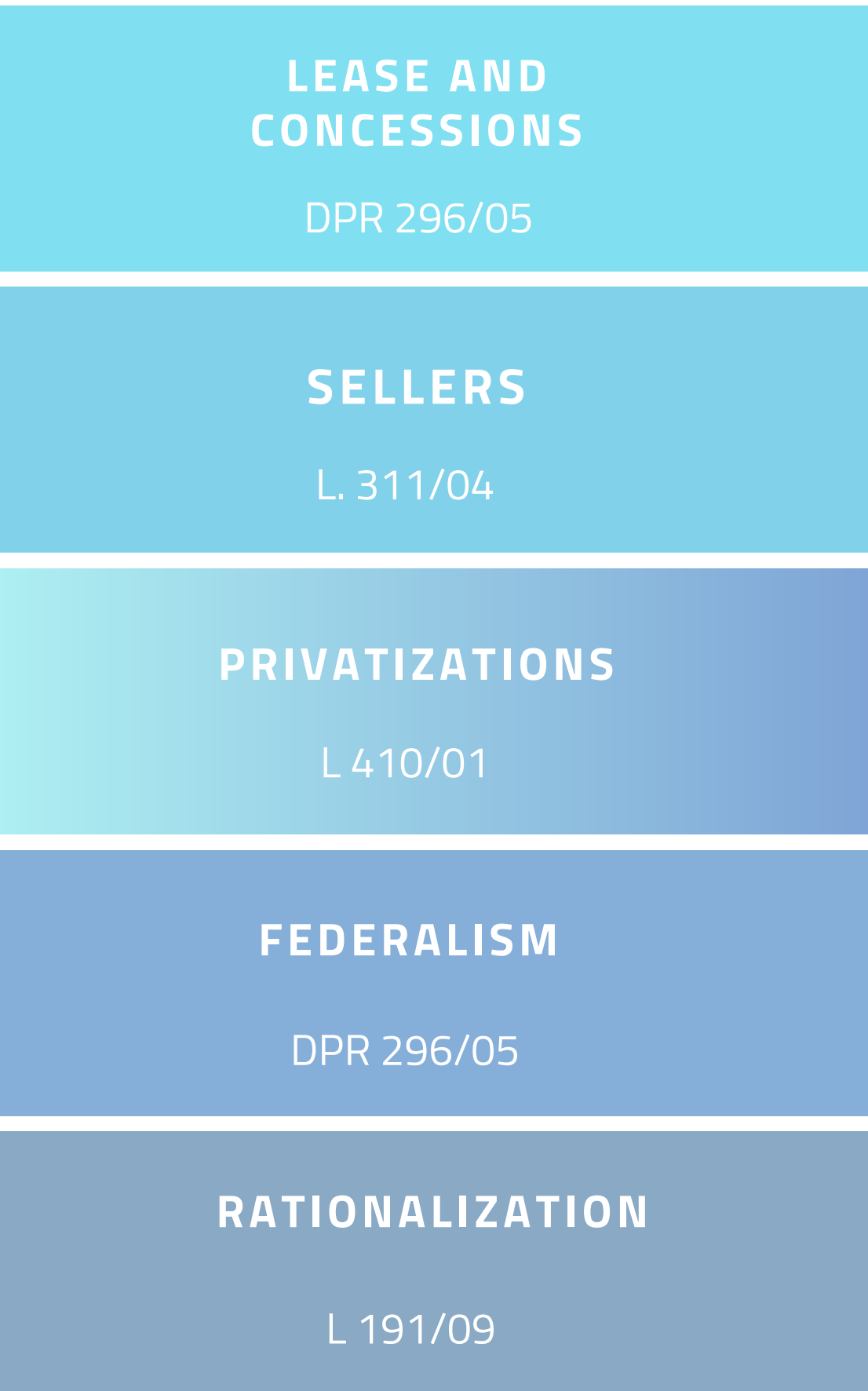
Urban Renaissance: A New Vision for Sustainable and Innovative City Development



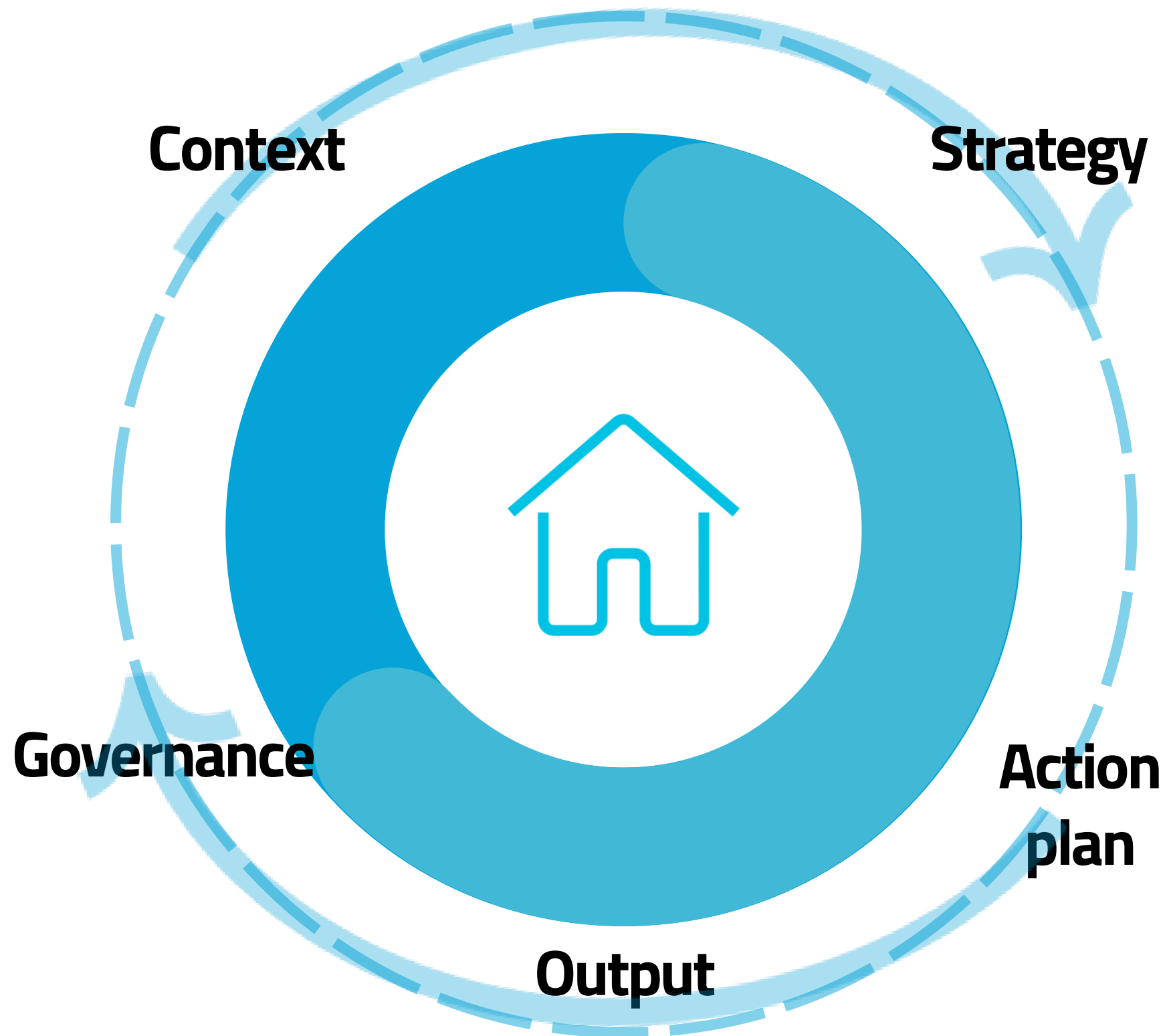
THE EVOLUTION OF HERITAGE POLICIES



PARADIGM SHIFT: from the centrality of the property to the centrality of the territory



THE COMPLEX ORGANISM: THE CITY PLAN



SYSTEMIC APPROACH

All the components of the system interact with each other and with the external environment in the path of sustainable development of the territory.

MULTIDISCIPLINARY APPROACH

The Plan requires interaction and integration among all the different components of territorial development (e.g. urban, social, economic, infrastructure, environmental, cultural, etc.).

MULTISTAKEHOLDER APPROACH

Stakeholders, both internal and external, from the public and private sectors, work on integrating their respective strategies with a view to synergistic dialogue.

MULTILEVEL APPROACH

The governance integrates various levels of territorial government in a dimension of complementarity rather than opposition.

THE CITY PLAN: THE CONTENTS

The context

- Analysis of real estate assets, needs, urban and territorial planning tools, socio-economic context, financial resources, real estate market, climate-environmental risks.

The strategy

- Analysis of territorial strengths and gaps, the vision of the City, the Agency's objectives, strategies of other property owners, convergence map, multi-stakeholder consultation.

Action plan

- Public works, rationalization, urban regeneration, efficiency, portfolio optimization, tactical urban planning.

Output

- Savings/income goals, activated/activatable investments, ESG objectives.

Governance

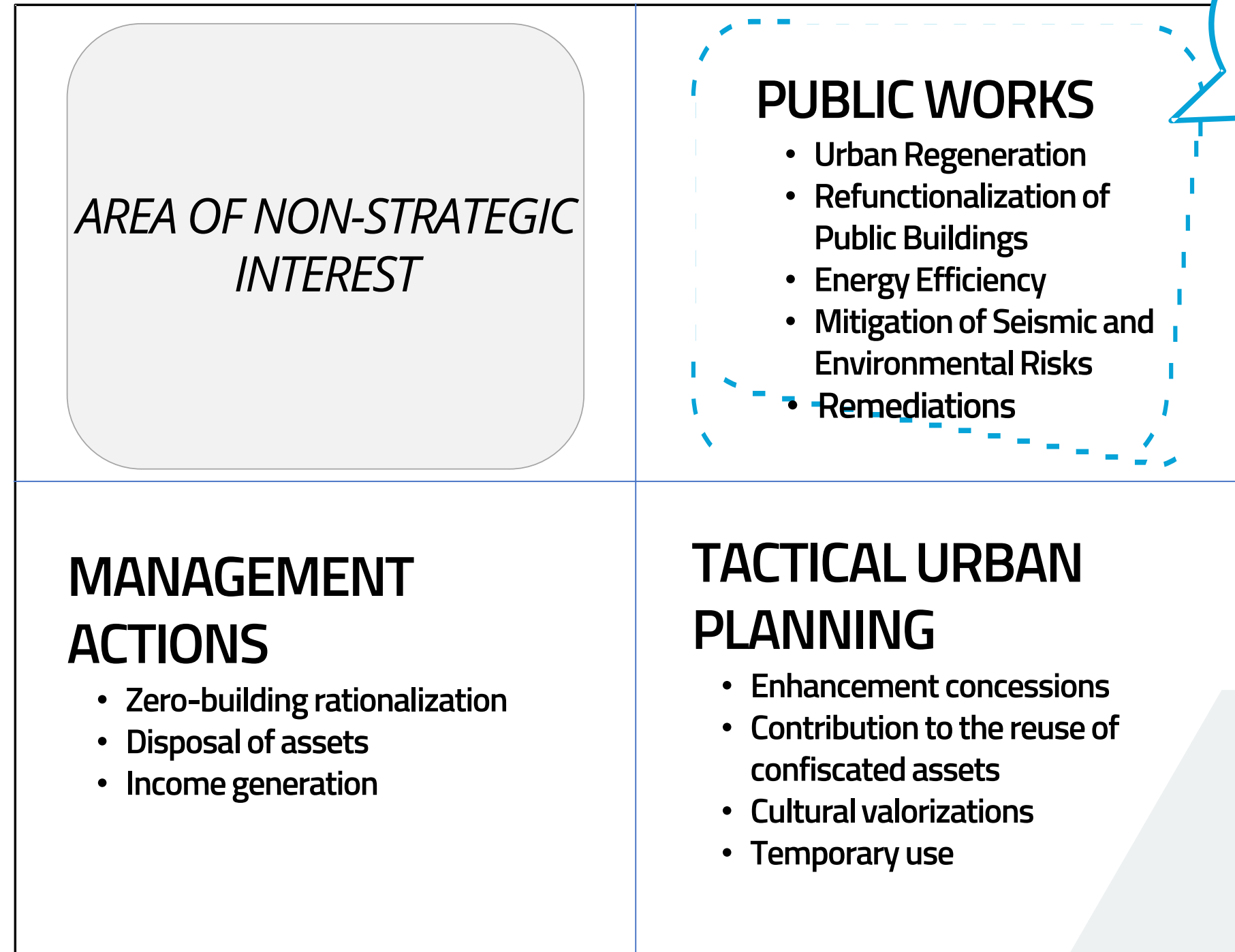
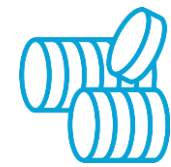
- The governance model, monitoring of achieved results and risk management, maintenance of the Plan over time and realignment

THE IMPACT MATRIX OF ACTIONS

+

PUBLIC INVESTMENTS

⊖

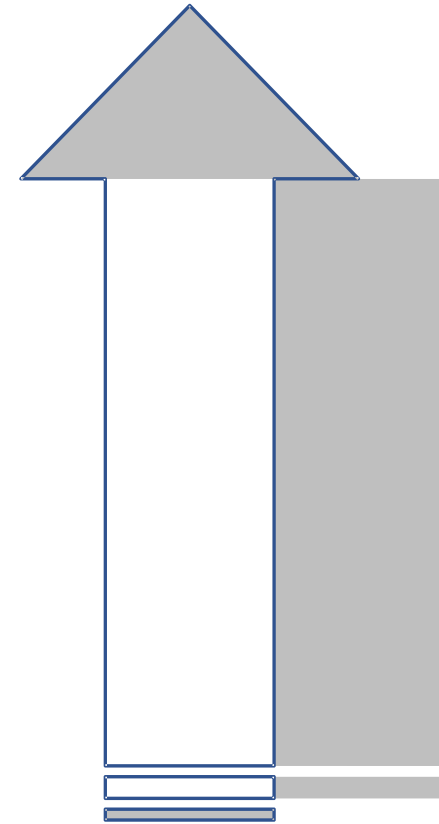


STRATEGIC AREA



THE IMPACT MATRIX OF ACTIONS

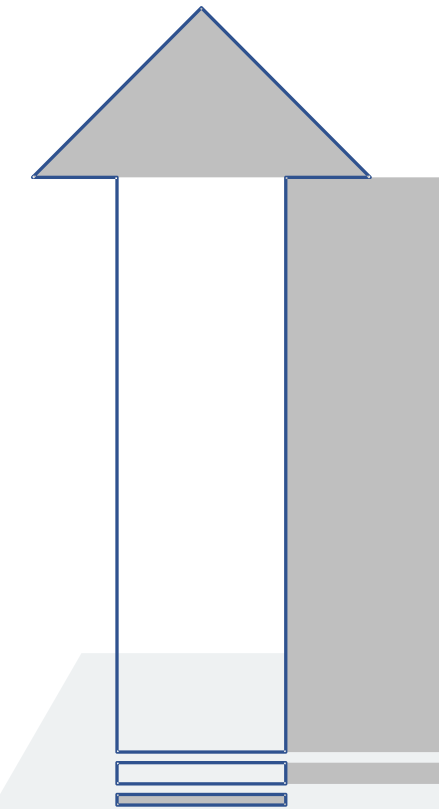
Systemic Approach



From an economic-accounting approach



According to an INPUT/OUTPUT logic

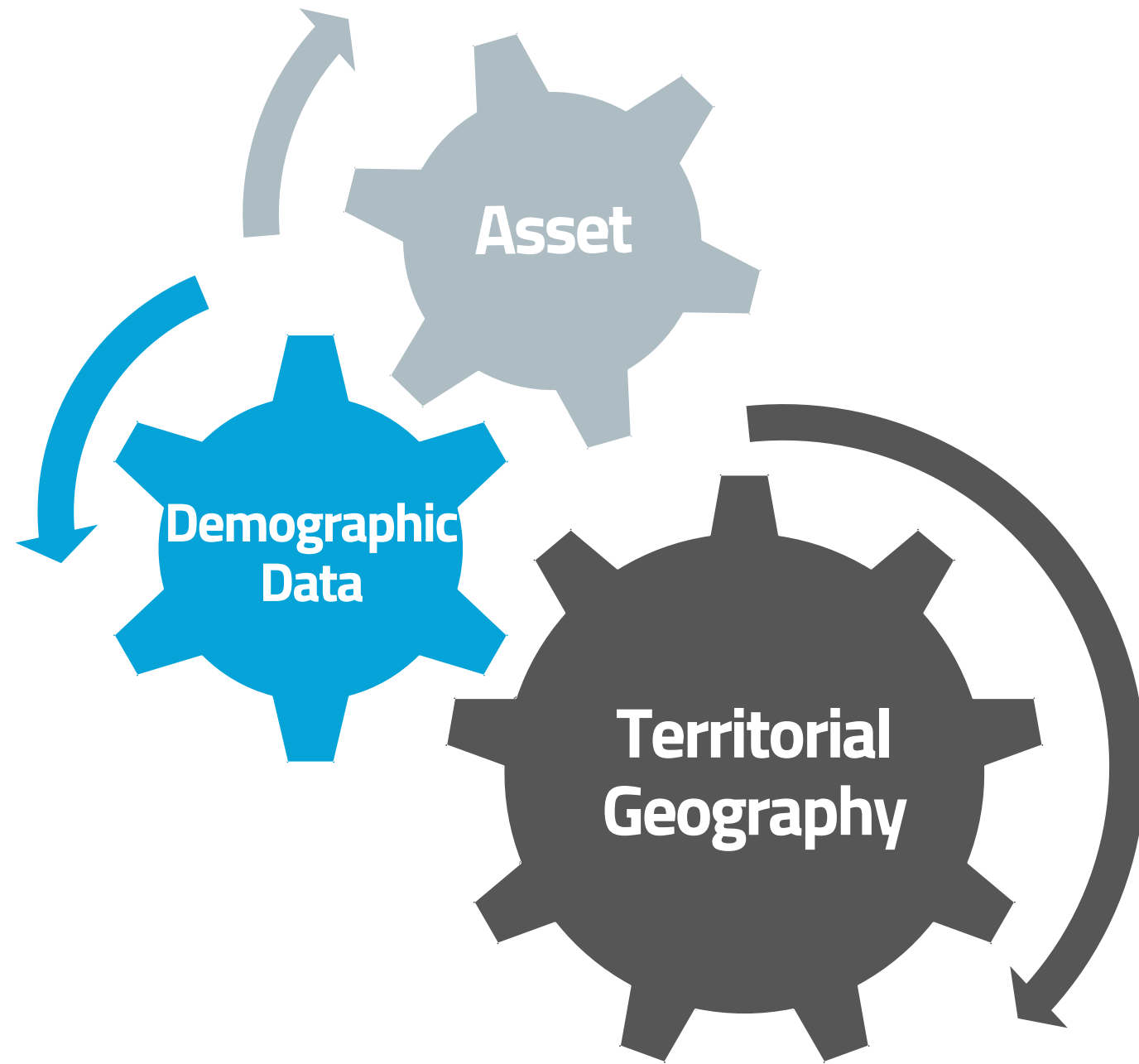


Dal DCF

GIS Geographic Information System



GEOPORTAL: STAGES OF INTEGRATION



October

...

- Properties owned by Public Entities
- Regulatory Plans
- Mobility Plans
- Relevant Infrastructures
- Hydrogeological Layout Plan
- Seismic Risk Mapping
- Protected Areas System
- Port System

December

- Data from Movyon and Leonardo experiments
- Other detailed information layers on the geography of places

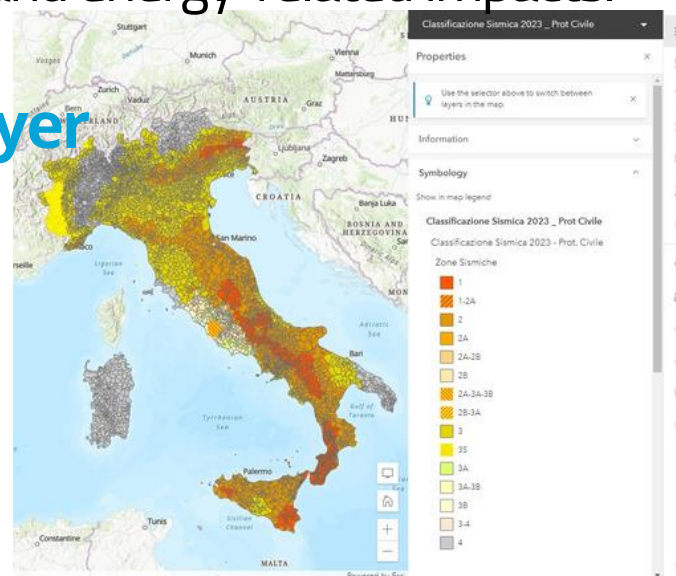
2024

- Sets of economic and social information

GEO-PORTAL Agenzia del Demanio INTEGRATION STEPS

- The GeoPortal will allow users to access information about the properties managed by the Agency of Public Real Estate, thanks to the Digital Property Identity (IDI) that gathers all the data about the property and makes it available for consultation. Additionally, the GeoPortal will enable users to query informational layers about the territory, enhancing the understanding of the property's context. Furthermore, the GeoPortal will also provide the ability to view the territorial initiatives of the Agency of Public Real Estate, monitoring their progress and assessing their social, economic, and energy-related impacts.

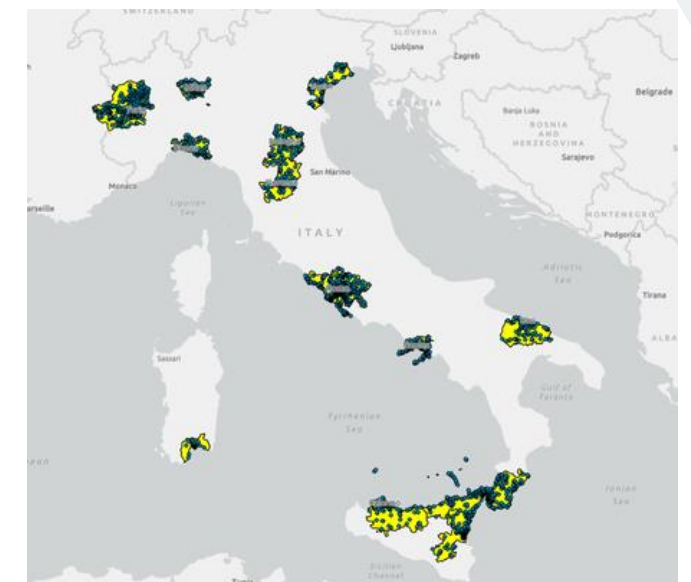
Example of a cartographic layer



CITY PLAN: To meet the specific needs necessary for the implementation of the Agency's "City Plan" macro-process, the geoportal will allow for:

- Analysis of alphanumeric data related to properties owned by the State as well as properties owned by Local Authorities.
- Correlation of alphanumeric data with geographical, urban, infrastructural, etc. data (providing results through overlaying of informational content).
- Definition, classification, and sharing of new informational layers containing the results of analyses with involved Local Authorities.

City Plan



COLLABORATIONS FOR DATA ENRICHMENT

The circularity of data and information enrichment leads to an increased understanding of the property and the associated territory.

AREAS

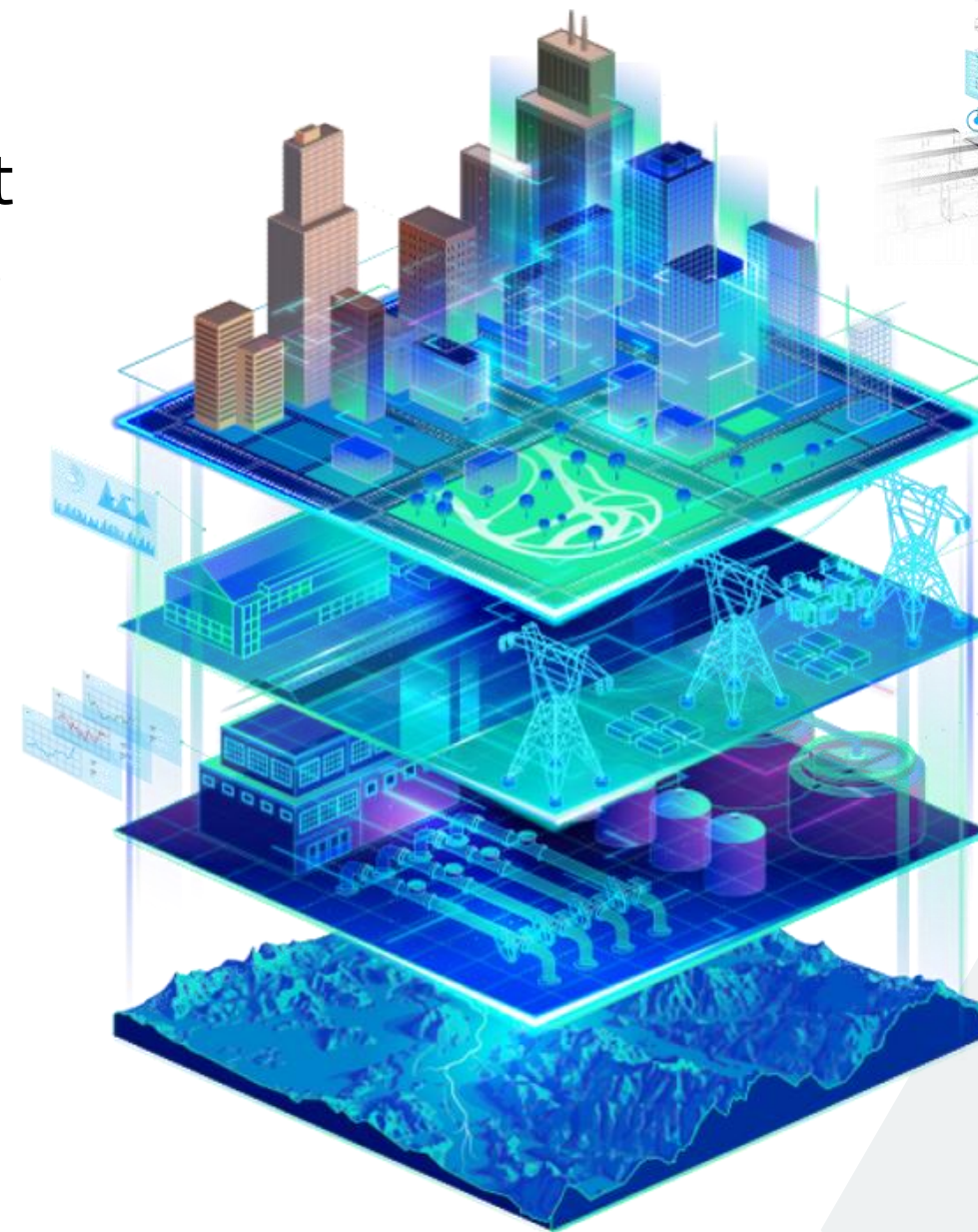
- Mountainous
- Land designated for photovoltaic development
- Refunctionalization of instrumental properties
- Properties intended for concession with investments

ENRICHMENT OF:

- **Cartographic layers**
- **Numerical indicators**
- **Digital Twin**

Data integration and enhancement of operational system capabilities.

Centralized Data Management



COLLABORATIONS FOR DATA ENRICHMENT

TECHNICAL-SCIENTIFIC RESEARCH

WITH CMCC ON THE IMPACTS OF CLIMATE CHANGE ON PUBLIC REAL ESTATE ASSETS.

FIRST IMPACT ANALYSIS ON 14 METROPOLITAN AREAS

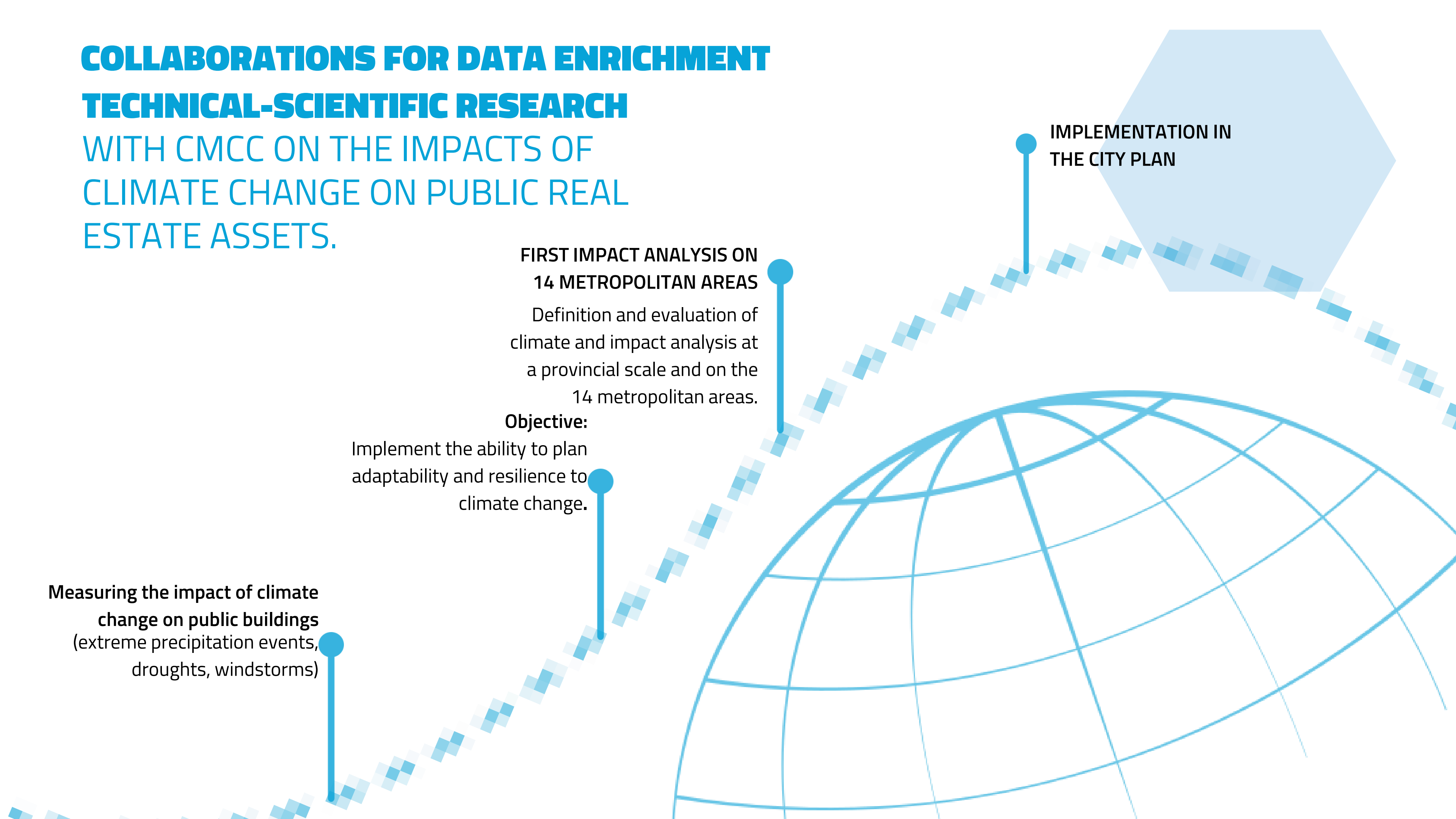
Definition and evaluation of climate and impact analysis at a provincial scale and on the 14 metropolitan areas.

Objective:

Implement the ability to plan adaptability and resilience to climate change.

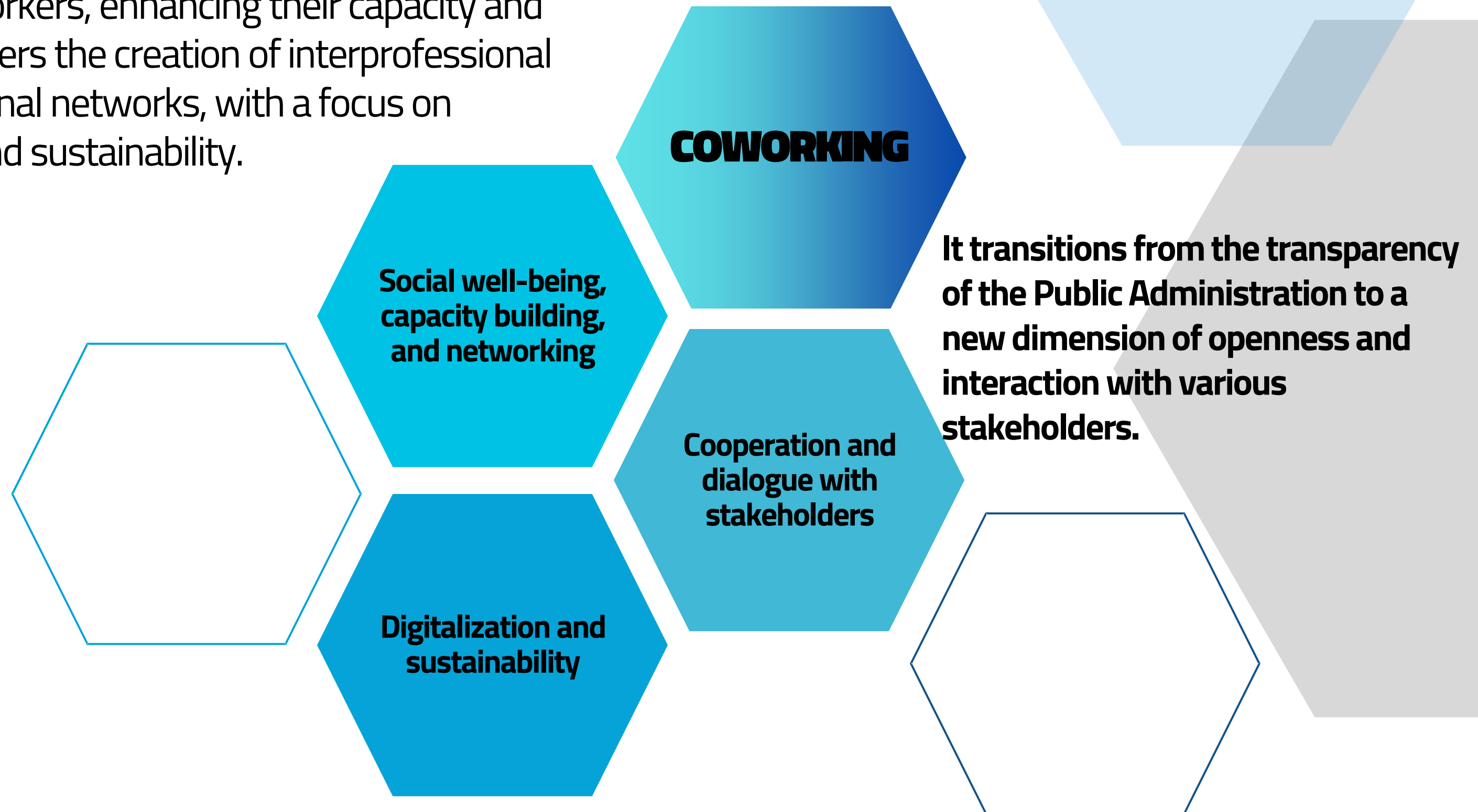
Measuring the impact of climate change on public buildings (extreme precipitation events, droughts, windstorms)

IMPLEMENTATION IN THE CITY PLAN



THE CELL AT THE CORE OF THE NEW ENTITY: THE NEW PUBLIC OFFICE MODEL

The new model of public office allows for an improved work-life balance, promotes information exchange among office/administration workers, enhancing their capacity and performance. It also fosters the creation of interprofessional communities and relational networks, with a focus on digitization, resilience, and sustainability.





AGENZIA DEL DEMANIO

GRAZIE PER L'ATTENZIONE



OFFICINA
RIGENERAZIONE
IMMOBILE PUBBLICO